



STREET LIGHTING RESOLUTION

The following Resolution #24 (2024-2525) was adopted by the City Council of the City of Slater at a meeting held on December 9, 20 24.

Be it resolved by the City Council of the City of Slater, that Alliant Energy Inc. is hereby directed to make the following changes to the existing system, at the locations described below (or shown on an attached map made a part of this Resolution) according to the terms expressed in the IPL Tariff regarding street lights:

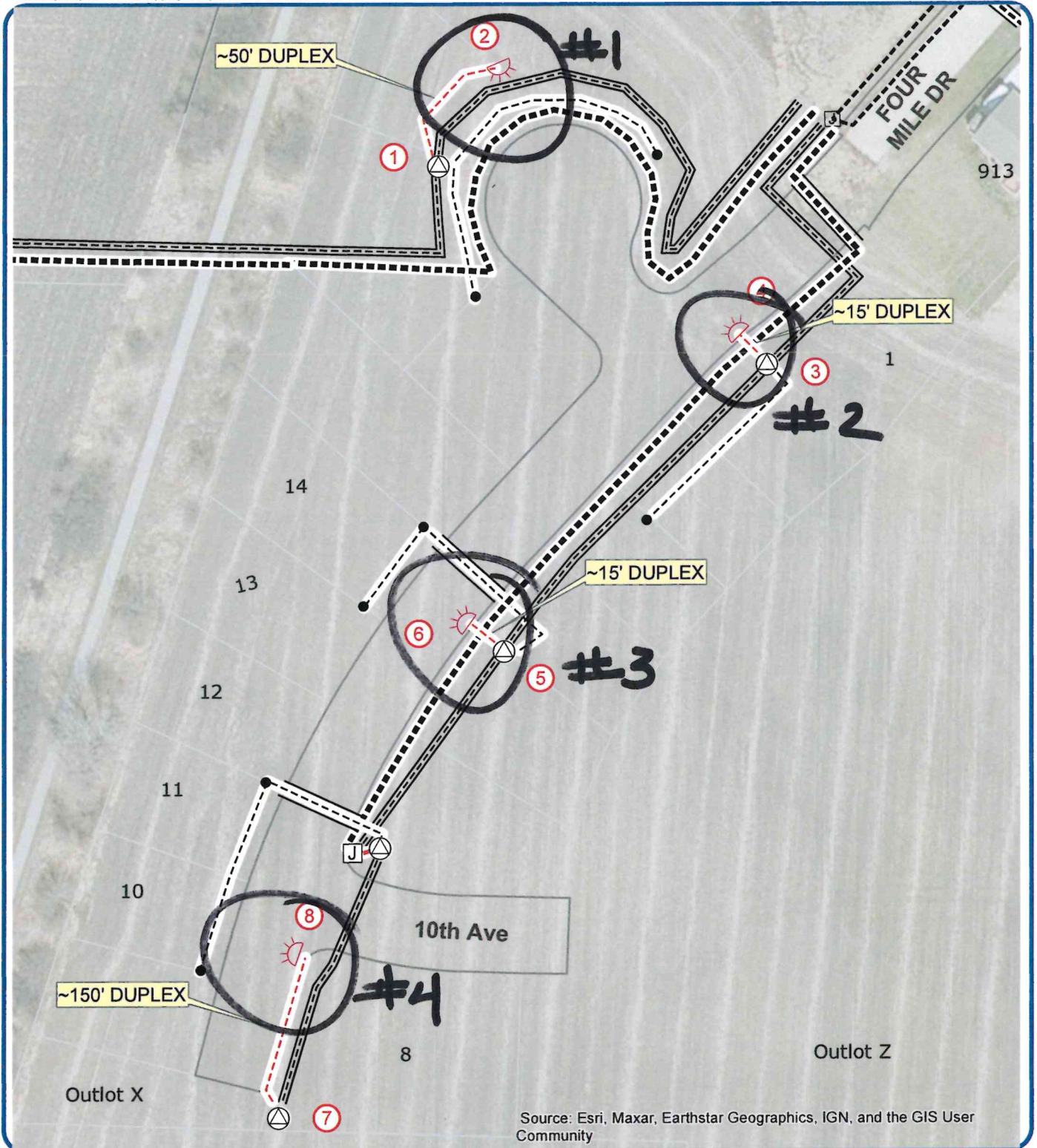
NEW INSTALLATION OR CHANGES IN EXISTING SYSTEM					
ADD NUMBER	DELETE NUMBER	WATTAGE	STYLE OF LUMINAIRE	TYPE AND HEIGHT OF POLE	WIRING (check one)
1. <u>4</u>		<u>72</u>	<u>N/A</u>	<u>30' STEEL</u>	<input type="checkbox"/> OH <input checked="" type="checkbox"/> UG
2. _____					<input type="checkbox"/> OH <input type="checkbox"/> UG
3. _____					<input type="checkbox"/> OH <input type="checkbox"/> UG

LOCATION OF NEW INSTALLATION OR CHANGES
1. <u>PRAIRIE CREEK PLAT 8</u>
2. _____
3. _____

City Official _____
declared said Resolution duly passed and adopted the 9th
day of December, 20 24.

Attest _____
Title _____

Interstate Power and Light Company (IPL) and Wisconsin Power and Light Company (WPL) both Alliant Energy utility companies and hereafter referred to as the Utilities) assume no liability and make no warranty or representation whatsoever as to the accuracy or completeness of the information contained on this map. Any data provided is for general information only and any use of this data is at your own risk. Any intention to excavate requires compliance with state law including contacting the appropriate one call notification center. Prior to excavation, the actual physical location of buried facilities must be determined pursuant to the requirements of applicable law. This map constitutes limited protected nonpublic data that is confidential and proprietary to the Utilities. By one of the Utilities issuing you a copy of this map, You are deemed to have agreed to treat this information as confidential and to use and disclose it only for the specific project identified in your request for the map and as further restricted below. (If you disagree, please destroy this map and inform the Alliant Energy representative that sent it to You that You cannot comply, that your copy has been removed from all storage mechanisms, and that You will not further use this map.) This map may only be copied or reproduced for internal use by the Utilities or copied, reproduced, or disclosed by You subject to the terms of a nondisclosure or confidentiality agreement between your organization and those to whom you intend to disclose such information for a specific project, whereby the potential recipients agree to use this map only for the specific project identified in the request for the map and to treat this map as the Utilities' confidential and proprietary information restricted from further use, copying or disclosure indefinitely. Any other use, copying or reproduction is strictly forbidden.



Source: Esri, Maxar, Earthstar Geographics, IGN, and the GIS User Community



Alliant Energy Confidential
Classification: Confidential
 1:1,300

SLATER - PRAIRIE CREEK PLAT 8
STREET LIGHTS WO 1028106



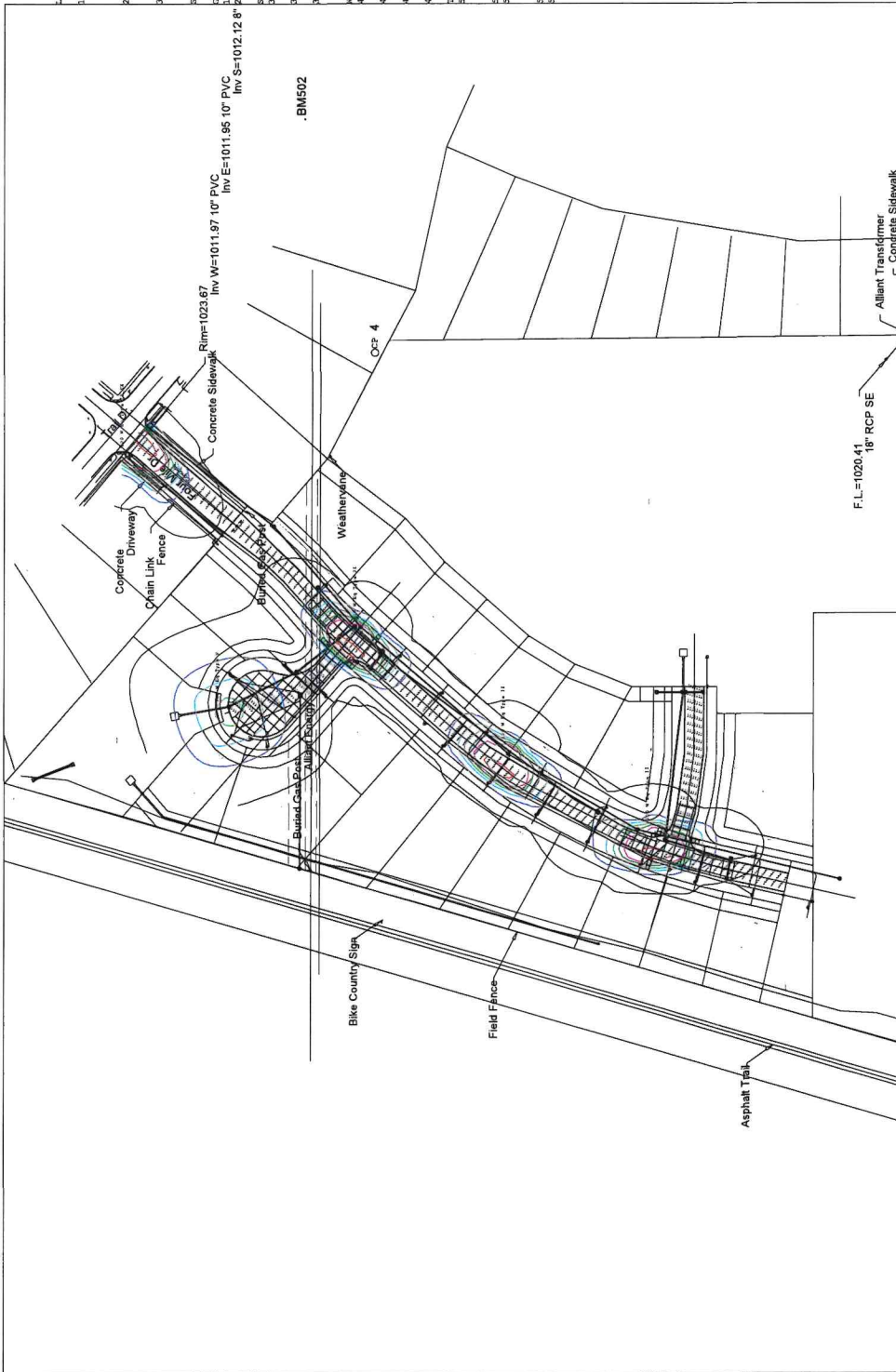
Prairie Creek Plat 8
Slater, Iowa

Lighting Construction Notes:

1. Provide traffic control in accordance with the MUTCD. Submit a copy of the traffic control plan to the City of Slater Public Works Department at least 48 hours prior to closing any traffic lanes.
 2. Contact the City of Slater Public Works Department for information on utility work for City sanitary and storm sewers. Obtain utility work for Public Improvements.
 3. Construction to be in compliance with City of Slater Guidelines for Public Improvements.
- Standard Specifications for Utility Placement.
- General:
1. Maintain six feet (6') of clearance from back of curb.
 2. Do not place beneath sidewalk or trails except to cross.

- Sewers
- a. Maintain five feet (5') of horizontal clearance from storm sewer pipes and structures.
 - b. Maintain five feet (5') of horizontal clearance from sanitary sewer pipes and structures.
 - c. Maintain five feet (5') of horizontal clearance from storm and sanitary sewers at an angle of 90 degrees wherever possible.
- Water
- a. Maintain five feet (5') of horizontal clearance from water mains.
 - b. Do not cross above a fire hydrant branch within four feet (4') of a hydrant.
 - c. Maintain six inches (6") of horizontal clearance behind hydrants.
 - d. Cross water mains at an angle of 90 degrees wherever possible.

- Traffic
- a. Maintain five feet (5') of horizontal clearance from signal poles and traffic cabinets. Do not exceed 5 feet (5') deep within 10 feet.
 - b. One foot (1') vertical clearance from signal conduit.
 - c. Maintain two feet (2') horizontal clearance from fiber and interconnect lines and two feet (2') vertical clearance when crossing.
 - d. One foot (1') horizontal clearance from handholes.
 - e. Cross fiber optic and interconnect lines at an angle of 90 degrees wherever possible.



Snyder & Associates, Inc. #122.0127.01 08-21-2024

Assumptions:
-Proposed LED 150W Equivalent, Type II and Type V Distribution
-Cooper Lighting Solutions Type - 323-332797 and 323-332800

- 30 ft Mounting Height
- 6' Luminaire Arm. Offset from back of curb equal to arm length unless utility conflicts
- 3 Proposed Type II Fixture Locations
- 1 Proposed Type V Fixture Location
- 1 Existing Type II Fixture Locations

Isoline Legend

Value (fc)	Color	Value (fc)	Color	Value (fc)	Color
0.01	Black	0.4	Green	1.5	Purple
0.1	Blue	0.5	Pink	2	Black
0.2	Cyan	0.75	Red		
0.3	Light Green	1	Dark Red		

ILLUMINATION CALCULATION SUMMARY					
Label	Units	Avg	Max	Min	Avg/Min
10th Avenue	FC	0.07	0.6	0.0	N.A.
9th Circle	FC	0.18	0.9	0.0	N.A.
Four Mile Drive	FC	0.26	0.9	0.0	N.A.

Scale: 1 inch= 150 Ft.